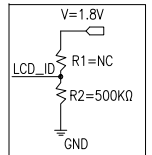


PIN DESCRIPTION	
PIN	SYMBOL
1	GND
2	VLED_K
3	LRSTB
4	LPTE
5	VCC
6	IOVCC
7	LCD_ID
8	GND
9	MIPI_TDN2
10	MIPI_TDP2
11	GND
12	GND
13	GND
14	VLED_A
15	GND
16	MIPI_TCP
17	MIPI_TCN
18	GND
19	MIPI_TDN0
20	MIPI_TDP0
21	GND
22	MIPI_TDN1
23	MIPI_TDP1
24	GND



NOTES:

1. DISPLAY TYPE: TFT, TRANSMISSIVE, NORMALLY BLACK
2. OPERATING VOLTAGE: VCC=3.3V (TYP.)
3. VIEWING DIRECTION: FULL VIEWING ANGLE
4. DRIVER IC: ILI9881
5. OPERATING TEMP.: -20°C ~ 70°C
6. STORAGE TEMP.: -30°C ~ 80°C
7. LED BACKLIGHT: 20-CHIP WHITE LED, IF=80mA, VF=14.5V~16.5V
8. SURFACE LUMINANCE: 300CD/M² (TYP.)
9. TOP POLARIZER SURFACE TREATMENT: ANTI-GLARE
10. GENERAL TOLERANCE: ±0.3MM
11. ROHS COMPLIANT

MIT MULTI-INNO TECHNOLOGY CO., LTD.

DRAWN BY:	CAROL	2021.04.12		MODULE P/N:
CHECKED BY:			SCALE : 1/1	MI0700DLT-1
APPROVED BY:			UNIT: mm	DESCRIPTION:
VERSION NO:	01		SHEET NO.: 1/1	TFT MODULE

VER.	REVISED DESCRIPTION	REVISER	DATE
01	FIRST ISSUE	CAROL	2021.04.12